

GB4U8 RFID Inlay

Applications

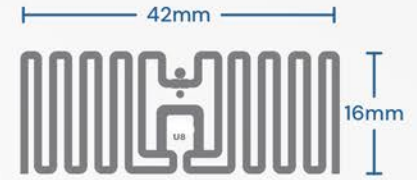
Apparel - Baggage - Denim - Footwear - Polybags - Retail

Key Benefits

- ✓ Pre-Serialization of 96 bit EPC
- ✓ Excellent Performance
- ✓ Compact Antenna Size
- ✓ Robust Performance on Variety of Materials

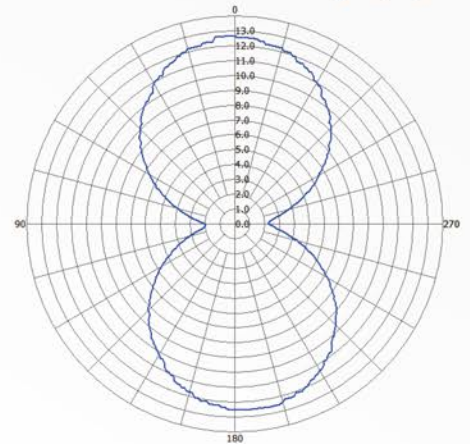
Technical Features

Antenna Size / Web Width	42 X 16 mm [1.65 X 0.63 in] / 65 mm [2.56 in]
Integrated Circuit (IC) Type	NXP UCODE 8
Operating Frequency	860 - 960MHz
RF Communications Protocol	ISO/IEC 18000-63 and EPC Global Class 1 Gen2
ARC Approved Spec	N, Q, M, G, F, W2, W5, W6
Chip Memory	128 bits EPC
Inlay Substrate Material	PET
IC Features	Auto Adjust Technology, Brand Identifier, Pre-serialized 96bit EPC, Broad Bandwidth
Read Sensitivity	-24 dBm
Write Sensitivity	-22 dBm
Operating Temperature	-5°C to 60°C / 23°F to 140°F
Operating Humidity	20% - 60% RH



GB4U8

Orientation Read Range (m)



Sensitivity Results from Free Space (dBm)

