

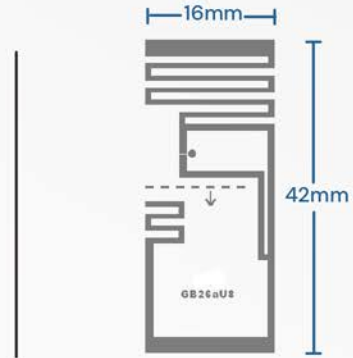
# **GB26aU8 RFID Inlay**

## Applications

Accessories - Cosmetics - Item/Asset Tracking - Jewelry  
Metallic Items

## Key Benefits

- ✓ Pre-Serialization of 96 bit EPC
- ✓ Compact Inlay Size
- ✓ Excellent Performance on Metal
- ✓ Inventory Management

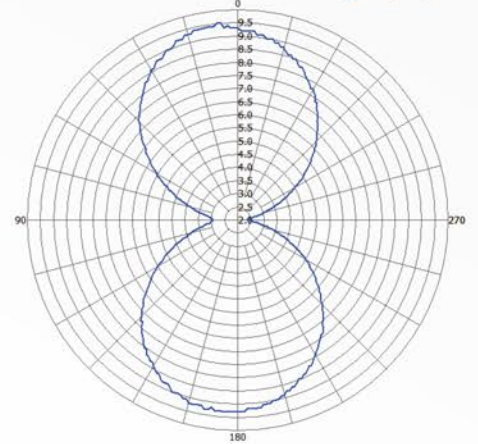


GB26aU8

## Technical Features

Antenna Size / Web Width	42 X 16 mm [1.65 X 0.63 in] / 55 mm [2.165 in]
Integrated Circuit (IC) Type	NXP UCODE 8
Operating Frequency	860 - 960MHz
RF Communications Protocol	ISO/IEC 18000-63 and EPC Global Class 1 Gen2
ARC Approved Spec	Pending
Chip Memory	128 bits EPC
Inlay Substrate Material	PET
IC Features	Auto Adjust Technology, Brand Identifier, Pre-serialized 96bit EPC, Broad Bandwidth
Read Sensitivity	-23 dBm
Write Sensitivity	-18 dBm
Operating Temperature	-5°C to 60°C / 23°F to 140°F
Operating Humidity	20% - 60% RH

### Orientation Read Range (m)



### Sensitivity Results from Free Space (dBm)

