

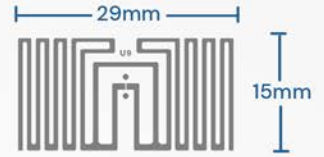
GB19U9 RFID Inlay

Applications

Accessories - Cosmetics - Item/Asset Tracking - Jewelry

Key Benefits

- ✓ Pre-Serialization of 96 bit EPC
- ✓ Compact Inlay Size
- ✓ Excellent Performance
- ✓ Inventory Management

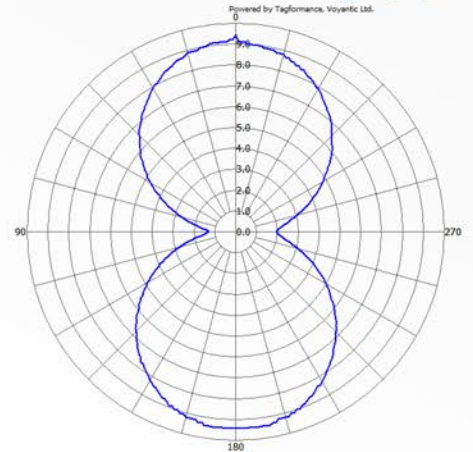


GB19U9

Technical Features

Antenna Size / Web Width	29 X 15 mm [1.14 X 0.59 in] / 45 mm [1.772 in]
Integrated Circuit (IC) Type	NXP UCODE 9
Operating Frequency	860 - 960MHz
RF Communications Protocol	ISO/IEC 18000-63 and EPC Global Class 1 Gen2
ARC Approved Spec	Q
Chip Memory	96 bits EPC
Inlay Substrate Material	PET
IC Features	Auto Adjust Technology, Brand Identifier, Pre-serialized 96bit EPC, Broad Bandwidth
Read Sensitivity	-24 dBm
Write Sensitivity	-22 dBm
Operating Temperature	-5°C to 60°C / 23°F to 140°F
Operating Humidity	20% - 60% RH

Orientation Read Range (m)



Sensitivity Results from Free Space (dBm)

